

draft

Carpark
 - general carpark location
 - final design to be determined

Paths
 - path to join carpark collector path
 - minimum path width throughout site to be 2.4m and 1.5 to picnic tables
 - paths to be compacted gravel

ST0002
RL 95.92

Trailhead shelter
 - STR 4.3 with roof to match the toilet and large shelter
 - compacted gravel surrounds
 - contains trail map, trail descriptions and rules of the trail

Push up trail
 - walk trail and push trail to the top of the downhill runs
 - minimum width 2.4m

Shelter
 - steel and colorbond shelter to be installed over concrete pad
 - large block retaining wall around outside to be no more than 1m high
 - surrounded by compacted gravel to width of 1.5m maximum

Batter earth as required, dress with stockpiled topsoil

Existing tree grove

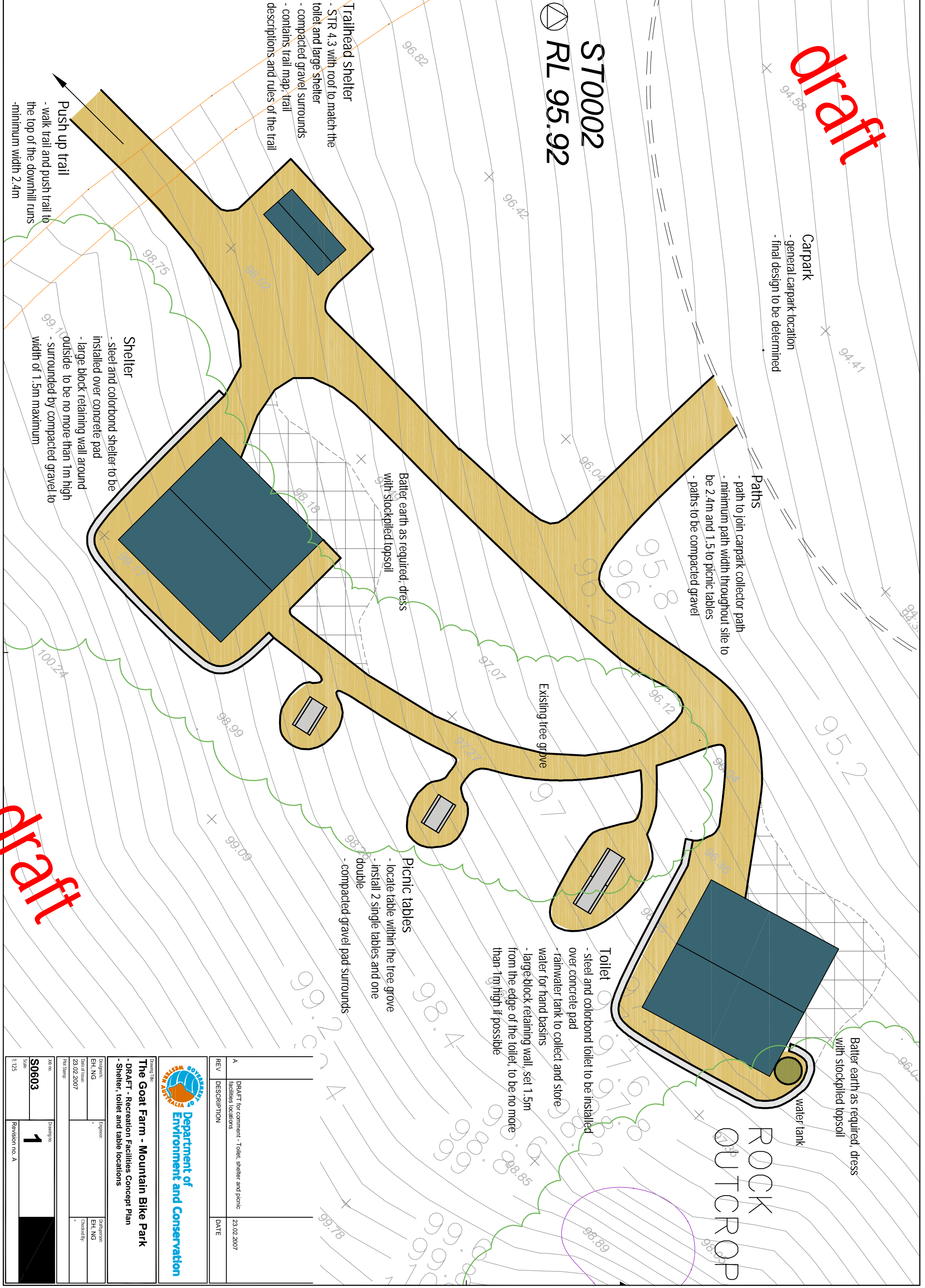
Picnic tables
 - locate table within the tree grove
 - install 2 single tables and one double
 - compacted gravel pad surrounds

Toilet
 - steel and colorbond toilet to be installed over concrete pad
 - rainwater tank to collect and store water for hand basins
 - large block retaining wall, set 1.5m from the edge of the toilet, to be no more than 1m high if possible

Batter earth as required, dress with stockpiled topsoil

water tank

ROCK OUTCROP



draft

REV	DESCRIPTION	DATE
A	DRAFT for comment - Toilet, shelter and picnic facilities locations	23.02.2007



The Goat Farm - Mountain Bike Park
 - DRAFT - Recreation Facilities Concept Plan
 - Shelter, toilet and table locations

Designers: EH, NG	Engineer:	Task Manager: EH, NG
Date of Issue: 23.02.2007	Checked By:	
Job no: S0603	Scale: 1:125	Drawing no: 1
Revision no. A		